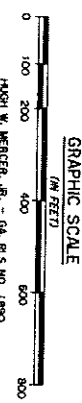


TOTAL AREA : 115,280 ACRES

A BOUNDARY & PARTITIONING SURVEY FOR

**NANCY M. CURTIS**

PART OF A. M. GARR ESTATE TRACT  
 LAND LOTS 110 & 111, FOURTH LAND DISTRICT  
 632ND (PROCTOR) GEORGIA MULTIA DISTRICT  
 MONROE COUNTY, GEORGIA  
 FIELD SURVEY : 3-(15,16,20,21,22,24)-06 & 4-7-06  
 PLAT PREPARATION : APRIL 14, 2006  
 SCALE : 1" = 200'



DR. BY : HWM/CADD (PAGE 2 OF 2) PLAT NO. 06-128.2

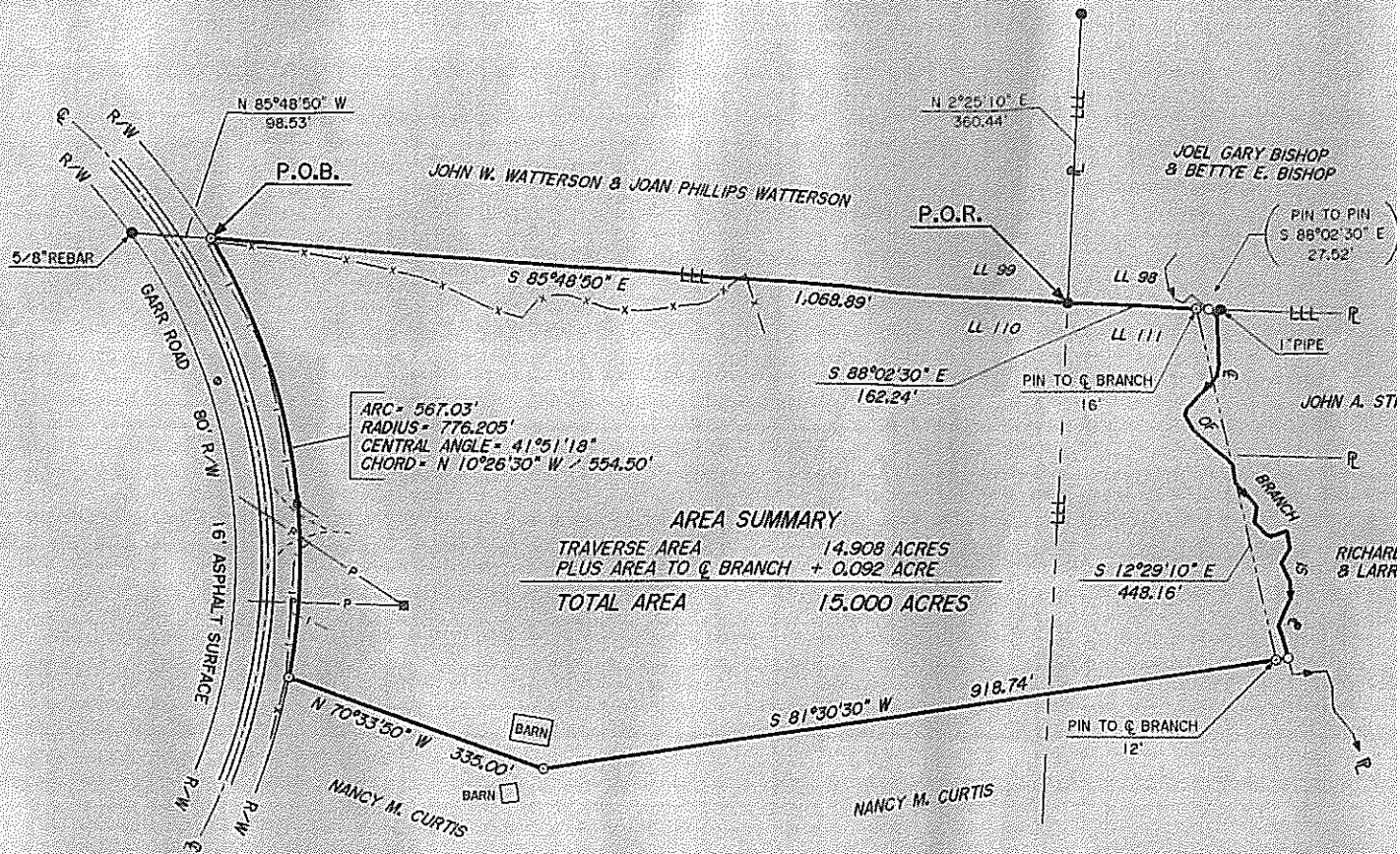
**PLAT CERTIFICATION**  
 I CERTIFY THAT, IN MY OPINION, THIS PLAT IS A TRUE AND CORRECT REPRESENTATION OF THE LAND PLATTED AND HAS BEEN PREPARED IN ACCORDANCE WITH THE STANDARD STANDARDS AND REQUIREMENTS OF GEORGIA LAW.  
 HUGH W. MERCER, JR.  
 MEMBER SURVEYOR

**ATTENTION**  
 THIS PLAT IS COMPRISED OF TWO PAGES :  
 THE TWO PAGES MUST BE UTILIZED TOGETHER.

CLERK OF SUPERIOR COURT, MONROE COUNTY, GA.  
 I certify that this instrument was filed  
 For record in my office  
 Sheri S. Boudin  
 at 2:58 PM, and includes Sheri S.  
 Boudin as Plat Book No. 288 Page 2285  
 Sheri S. Boudin  
 Clerk

© COPYRIGHT 2006  
**MERCER LAND SURVEYING, INC.**  
 52 NORTH JACKSON STREET  
 P. O. BOX 336  
 FORSYTH, GEORGIA 31029  
 478-994-6695

ANCE RATE MAP (FIRM) OF MCHROE COUNTY, GEORGIA (UNINCORPORATED AREAS); COMMUNITY-PANEL NUMBERS 133138-0025-0350; REVISED MARCH 17, 1997.



**AREA SUMMARY**

TRAVERSE AREA	14.908 ACRES
PLUS AREA TO Q BRANCH	+ 0.092 ACRE
<b>TOTAL AREA</b>	<b>15.000 ACRES</b>

**POINT OF REFERENCE (P.O.R.)**

FROM POINT OF BEGINNING (P.O.B.) MARKED BY AN IRON PIN AT THE NORTHWEST CORNER OF SUBJECT TRACT AS SHOWN HEREON; THENCE  $S 85^{\circ}48'50'' E$  1,068.89' TO P.O.R. MARKED BY AN IRON PIN AT THE SOUTHWEST CORNER OF TRACT "B" SHOWN ON PLAT IN PLAT BOOK 13, PAGE 33 (SEE "REFERENCE" HEREON), SAID P.O.R. ALSO BEING THE COMMON CORNER OF LAND LOTS 98, 99, 110, & 111.

**PLAT CERTIFICATION**

I CERTIFY THAT, IN MY OPINION, THIS PLAT IS A CORRECT REPRESENTATION OF THE LAND PLATTED AND HAS BEEN PREPARED IN CONFORMITY WITH THE MINIMUM STANDARDS AND REQUIREMENTS OF GEORGIA LAW.

© COPYRIGHT 2002

**MERCER LAND SURVEYING, INC.**  
 52 NORTH JACKSON STREET  
 P.O. BOX 336  
 FORSYTH, GEORGIA 31029  
 478-994-6695

MEMBER: SAMSOG, NSPS, & ACSM